

HELI
LIFTING THE FUTURE

24 YEARS

TOP1 FORKLIFT MANUFACTURER AND SALER
IN CHINA FOR CONSECUTIVE 24 YEARS

CQDH15C

1.5 Ton Scissor Reach Truck



Advantages

○ SAFETY AND STABILITY

Advanced AC control system eliminating the motor brushes and directional contactor, which makes the minimal maintenance requirements.
Stepless speed control Intelligent regenerative brake system: increase overall truck performance by decreasing battery charge intervals.
Equipped with adjustable hand-rest, adapted to different operator.
Multi-function display: battery status, hour meter, fault indicator etc.
Two sides-way battery with roll-out system is very convenient to replace batteries.
Damping cushion for low-noise operation.
Built-in pressure relief valve protects the trucks from overloads.
Emergency power disconnect.

○ STRUCTURAL

Low Center of Gravity ensures the stable operation.
Vertical driving wheel has a small turning radius and easy to maintain. The motor structure is water-proof and dust-proof.
The Scissor Reach Forks is operated by electric controller, which makes operation stable and no impact.

○ SERVICEABILITY

Low battery protection setting prolongs the battery use time.
CANbus technology reduces wiring complexity and increase reliability.
All pivot points have grease fitting and serviceable bushing, reducing component wear and extending component life.
The back cover is easy to open for maintenance and adjustment of parts of valve, oil tube and electronic parts.



Vertically mounted drive motor
CANbus technology reduces wiring
complexity and increase reliability.



Large cab with dead man power off
switch, Multi-function display: battery
state, hour metre, fault indicator etc.



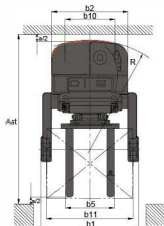
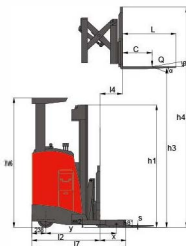
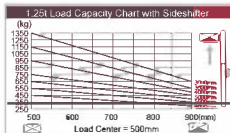
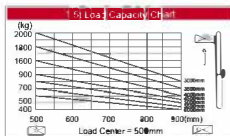
The optional of Double scissors
forks.



Side battery with roll-out system is
very convenient to replace
batteries. The battery upside cover
makes you easy to fill the battery.

HELI CQDH15C

Feature		CQDH15C (two-stage mast)				CQDH15C (two-stage mast)			
Model		CQDH15C (two-stage mast)				CQDH15C (two-stage mast)			
Drive type		electric				electric			
Operation type		standing				standing			
Load capacity/lifted load	Q kg	1500				1500			
Load centre distance	c mm	500				500			
Load distance, centre of drive axle to fork	x mm	450				450			
Wheelbase	y mm	1430				1455			
Wheels		polyurethane				polyurethane			
Tire size, front	mm	280x82(250x82)+160x60x2				280x82(250x82)+160x60x2			
Tire size, rear	mm	125x82x4				125x82x4			
Wheels number front/rear(x=driven wheels)		1+2				1+2			
Tread, front	b10 mm	678				678			
Tread, rear	b11 mm	1140				1140			
Dimension		Grad				2/5			
Tilt of mast/fork carriage forward/backward	Grad	2/5				2/5			
Height, mast to werde	h1 mm	2140	2390	2640	2200	2360	2520	2680	
Free lift	h2 mm	-	-	-	1575	1700	1825	1825	
Lift height	h3 mm	3000	3500	4000	4500	5000	5500	6000	
Height, mast extended	h4 mm	4070	4570	5070	4070	4670	5270	5870	
Overall length	l1 mm	2650				2650			
Length to face of forks	l2 mm	1170				1170			
Overall width	b1/b2 mm	1300/1400/1040				1300/1400/1040			
Fork dimensions	s/w1 mm	45x100x1070				45x100x1070			
Reach distance	l4 mm	500				500			
Ground clearance, centre of wheelbase	m2 mm	65				65			
Aisle width for pallets 1000x1200 crossways	Aat mm	2740				2765			
Aisle width for pallets 800x1200 lengthways	Aat mm	2910				2935			
Turning radius	W2 mm	1715				1735			
Performance		kg		1850/710		1920/880		1950/900	
Travel speed, laden/unladen	kg	1640/760	1640/760	1850/710	1970/930	1920/880	1920/880	1950/900	
Lift speed, laden/unladen	kg	595/3405	595/3405	810/3405	940/3460	890/3410	890/3410	940/3410	
Lowering speed, laden/unladen	kg	1100/2900	1100/2900	1340/2860	1750/2650	1600/2700	1600/2700	1600/2750	
Max gradeability, laden/unladen	km/h	6.5/7				6.5/7			
Axle loading, unladen front/rear	m/s	0.1/0.12				0.1/0.12			
Axle loading, fork advanced, laden front/rear	m/s	0.15/0.12				0.15/0.12			
Axle loading, fork retracted, laden front/rear	%	5/12				5/12			
Electrical configuration		electromagnetic braking system				electromagnetic braking system			
Service brake		electromagnetic braking system				electromagnetic braking system			
Battery voltage, nominal capacity K5	V/Ah	24/560				24/560			
Battery weight	kg	450				450			
Battery dimensions l/w/h	mm	770x336x610				770x336x610			
Sound level at the driver's ear acc.to DIN 12053	d(BA)	75				75			
Weight		kg		2560		2700		2950	
Service weight (with battery)	kg	2400	2400	2560	2700	2800	2900	2950	



Magro, S.A. de C.V.

www.magro.com.mx

(01) 0509 0990

ventas@magro.com.mx